



Lenguaje Dual

Asociación 1882

UTSA[®]

The University of Texas at San Antonio[™]

1882 Dual Language Community Lab
Schools Partnership

March 28, 2022

2nd Quarterly Board Meeting

Presentation

Dr. Juanita Santos, Ed.D.

Overview of 1882 Dual Language Partnership and Charter Performance Metrics

- **Academic Improvement** determined by meeting the overall rating as outlined in the agreement.
- **Organizational Strength** measured by charter fidelity, 1 out of 3 metrics (attendance, attrition, and parent/teacher survey).
 - All goals for student attendance for 2021-22 will be waived.
 - All goals for student attrition for 2021-22 will remain as written.
- **Financial Health** determined by audits conducted by SAISD and monthly reconciliation between UTSA executive director and principals.

Charter Performance Review



Annual Performance Review in Fall	
Years 1 – 3	Year 4
Monitor performance, no decisions made	Recommend renewal, revocation, or probation

School Decisions in Winter/Spring
New School Approval and Year 4 Renewals
Board authorizes new schools and votes on renewal, revocation or probation for year 4 schools, effective at end of school year

Overview of 1882 Dual Language Partnership



Irving Dual Language
Academy's Mariachi Juvenil

- Principals are currently discussing 22-23 staffing to ensure positions directly impact instruction opposed to non-academic staff.
- Staffing decisions are based on student outcomes.
- SAISD pays for staff according to needs of the campus, any positions above and beyond those are paid by 1882 funds.

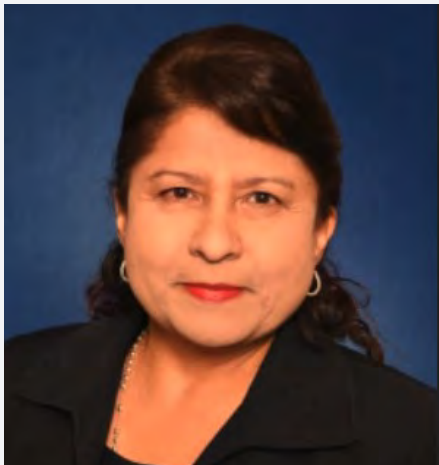
Overview of 1882 Dual Language Partnership



- Autonomy given to schools is lived out as outlined in the Partnership Agreement with continuous communication with John Norman.
- This freedom afforded principals is at the forefront of discussions.

Irving Dual Language Academy

Mrs. Olivia Almanza-
Peña, Principal



518 students
Grades PreK 3-8th
66 teachers
Dual Language wall-to-wall campus

\$363,774.00 SB 1882 Revenue
\$800 per student flat rate by SAISD
Reconcile the budget each month

97% Hispanic
90% At Risk
87% Eco Dis
8% SPED
4% GT

1882 funds support all subgroups as needed. Ex: SPED students received specific bilingual materials from the America Reading Company.

Irving 1882 Budget Plan 21-22

IRVING	\$363,774
Supplemental Teacher Reading Support	1
Instr. Coach	2
Master Teacher Stipends	7
Instructional Assistant	1
Technology/ Instructional Supplies	
Teacher and student travel	
Supplemental pay/Extra duty teacher	

Bonham Academy

Mrs. Blanca Gebhart,
Principal



649 students
Grades K-8th
72 teachers
Dual Language and Monolingual campus

\$486,710.00 SB 1882 Revenue
\$800 per student flat rate by SAISD
Reconcile the budget each month

92% Hispanic
5.5% White
57.6% At Risk
61% Eco Dis
8.2 % SPED
15.5% GT

1882 funds support all subgroups as needed.

Bonham 1882 Budget Plan 21-22

BONHAM	\$486,710
Assistant Principal	1
Instr. Coach	2
Master Teacher Stipends	2
Theater Arts	1
Teacher	1
Operations Network Coordinator	1
Technology/ Instructional Supplies	
Teacher and Student Travel	
Supplemental Pay/Contracted Services	

Twain Dual Language Academy

Mr. David García,
Principal



525 students
Grades PreK-7th
65 teachers
Dual Language wall-to-wall campus

\$405,759.00 SB 1882 Revenue
\$800 per student flat rate by SAISD
Reconcile the budget each month

92% Hispanic
73% At Risk
58% Eco Dis
8.3% SPED
11.7% GT

1882 funds support all subgroups as
needed.

Twain 1882 Budget Plan 21-22

Twain	\$405,759
Instr. Coach	2
Master Teacher Stipends	4
Supplemental Teacher (Reading Intervention/math)	1
Instructional Assistant	1
Technology/ Instructional Supplies	
Teacher (Conferences) and student travel (field trips)	
Supplemental pay/Extra duty teacher	
Campus materials (signage, marketing, playscape)	

Tier 1 Instructional Level- Math

	Bonham	Irving DL	Twain DL	District
Kinder	45%	★ 71%	★ 72%	62%
1 st	57%	47%	65%	44%
2 nd	44%	29%	57%	33%
3 rd	50%	43%	72%	39%
4 th	55%	53%	74%	42%
5 th	55%	40%	60%	39%
6 th	35%	24%	★ 68%	33%
7 th	41%	24%	★ 79%	38%
8 th	42%	33%	N/A	36%
All	47%	42%	68%	40%

Tier 1 - 41+%ile

*At or Above District Average

Tier 1 Instructional Level- Reading English

	Bonham	Irving DL	Twain DL	District
Kinder	36%	N/A	N/A	59%
1 st	★ 55%	★ 58%	★ 79%	36%
2 nd	24%	N/A	★ 50%	34%
3 rd	★ 66%	28%	★ 70%	44%
4 th	52%	41%	★ 73%	46%
5 th	51%	34%	★ 58%	45%
6 th	50%	21%	★ 68%	43%
7 th	58%	33%	★ 79%	49%
8 th	64%	55%	N/A	50%
All	55%	38%	71%	46%

Tier 1 - 41+%ile

*At or Above District Average

Tier 1 Instructional Level- Reading Spanish

	Bonham	Irving DL	Twain DL	District
Kinder	51%	★ 69%	56%	57%
1 st	44%	46%	★ 71%	50%
2 nd	★ 60%	43%	★ 77%	45%
3 rd	40%	33%	★ 58%	42%
4 th	43%	47%	52%	48%
5 th	50%	51%	53%	53%
6 th	N/A	N/A	53%	53%
7 th	N/A	N/A	83%	83%
All	51%	49%	63%	50%

Tier 1 - 41+%ile

*At or Above District Average

Bonham Academy Principal Search Timeline



San Antonio Independent School District

James Bonham
Academy

March	Bonham Principal Position Posts
April	Review Applications Level I Interviews: Candidates interview with UTSA and SAISD Leaders
May	Level II Interviews: Finalists interview with Bonham Community Representative Group Level III Interviews: Finalists interview with SAISD superintendent and UTSA COEHD Dean; both make the final decision. New Principal approved by SAISD Board of Trustees.

Process for Adding a New School to the Partnership



- UTSA and SAISD determine benefits and agree to adding a campus to the partnership.
- Negotiate the partnership agreement with John Norman as it will require an amendment.
- Amendment signed by UTSA and approved by UTSA DL CLS and SAISD Board.
- TEA Approval

Graebner Elementary

659 students

Prek-5th grades

78 Staff members

Rated B in 2019,
Projected Rating C in
2022

2020 Bond Renovations

Charter Start-up
\$900,000.00

Pillars

- Collaborative Leadership and Practice
- Culturally Responsive Pedagogy
- Community School Model

Approving Graebner Elementary to the Partnership

Ms. Rebecca DeLeon,
Principal



12 years in
education

University of Texas
at Austin and Trinity
University graduate

TEA Reading
Advisory
Committee

Dual language
teacher

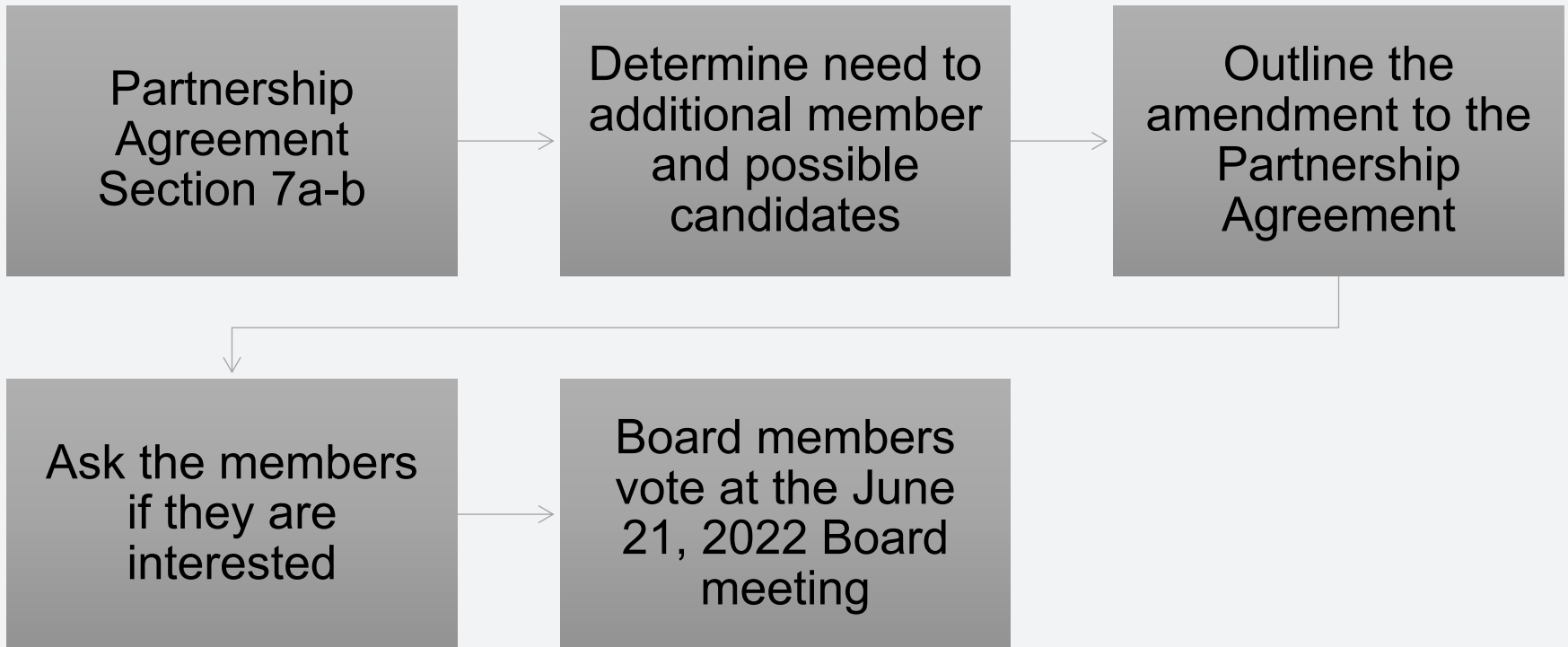
Science coach

Assistant principal

Spanish Language
Arts and Reading
Content Specialist

1st year principal

Process for Adding a New Board Member



1882 Partnership Research and Campus Support



Research
Approval Process

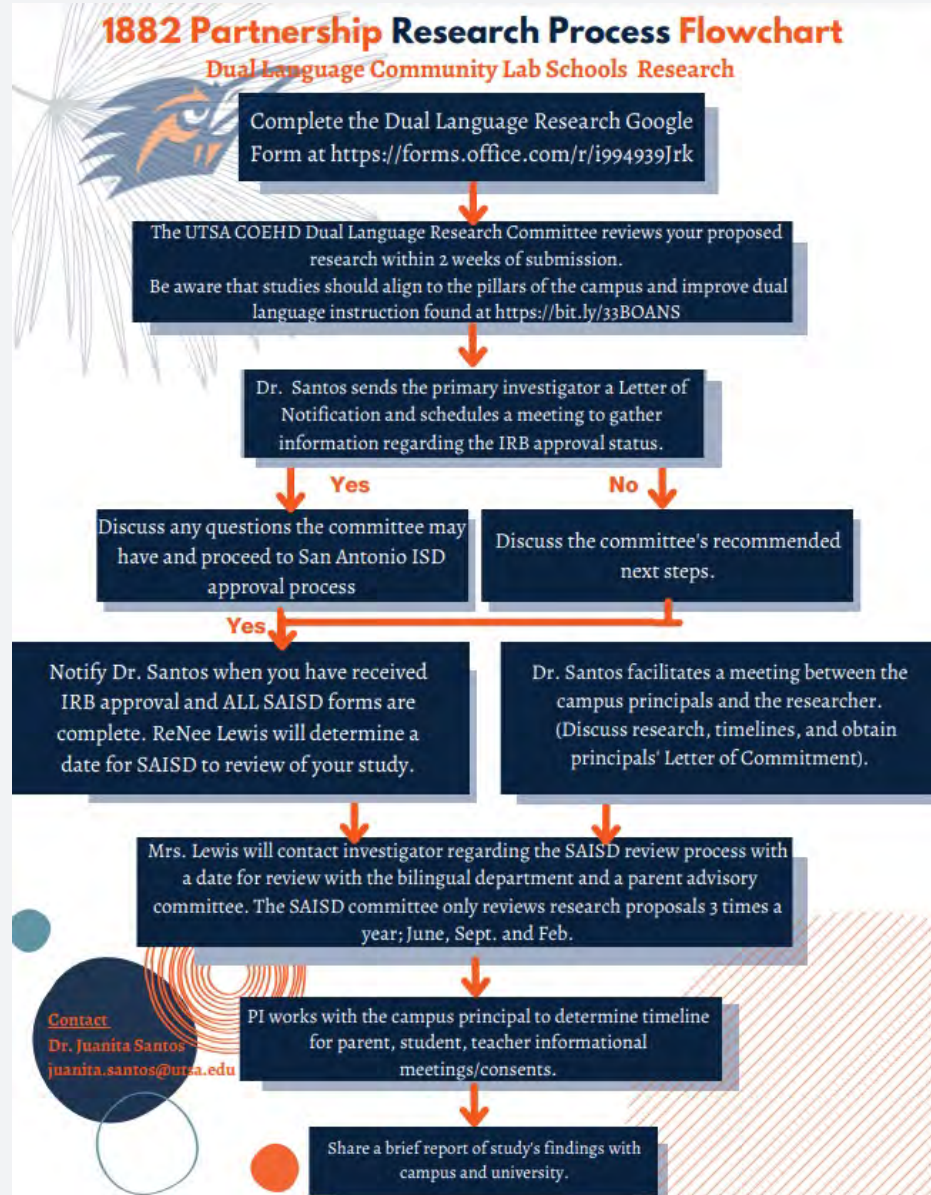


SAISD Approval

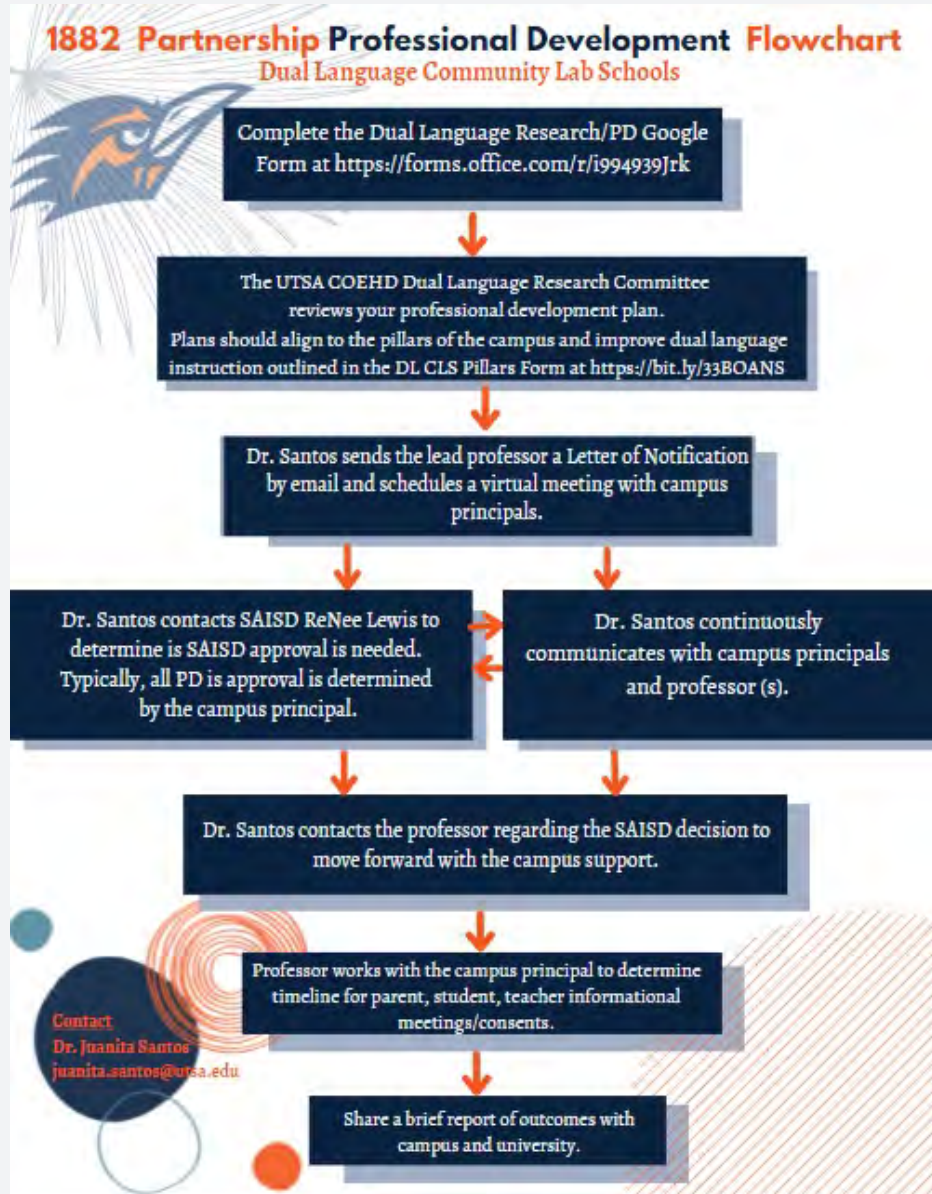


Research
Implications

Research Process Flowchart



Campus Support Flowchart



Primary Investigator	Topic	School	Status
Dr. Uchenna Emenaha	6th Grade science and social studies teachers' collaboration to develop culturally relevant units on socio-economic, historical, scientific, and cultural effects of public health issues.	All three campuses	Seeking SAISD Approval
Dr. Erica Castro-Villarreal	Graduate student SEL support for teachers with students	Irving	In Progress
Dr. Lucila Ek	Racial equity in STEM programs	All three campuses	Fall 2022
Dr. Becky Huang	Bilingual/dual language learners' language and literacy development	Bonham	Completed
Dr. Howard Smith	Biliteracy development, language arts instruction and victims of trauma	Bonham	Pending
Dr. Kristen Lindahl	Professional certification for dual language educators secondary levels.	All three campuses	In Progress
Dr. Kathryn Henderson	Secondary Oral Language Development	Twain	In Progress
Dr. Mariela Rodriguez	Critical role of principals and assistant principals in supporting	All three campuses	Pending

¡Celebraciones!



Student achievement is increasing based on STAAR Simulation assessments



Students engaged in theater arts, art, music, clubs , conjunto, mariachi, sports, etc. at increasing rates



Visitors from across the state and beyond; California, Southwest ISD, TEA, Uvalde ISD



UTSA increased interest in research at the campuses



TEA's Texas Dual Language Framework pilot



Excelencia in Education submission

Questions?

