



Lenguaje Dual

Asociación 1882

UTSA[®]

The University of Texas at San Antonio[™]

1882 Dual Language Community Lab
Schools Partnership

July 25, 2023

1st Quarterly Board Meeting Presentation

Dr. Juanita Santos, Executive Director

Dr. Sarah De La Garza, Assistant Director

United States Pledge of Allegiance



"I pledge allegiance to the flag of the United States of America, and to the republic for which it stands, one nation under God, indivisible, with liberty and justice for all."

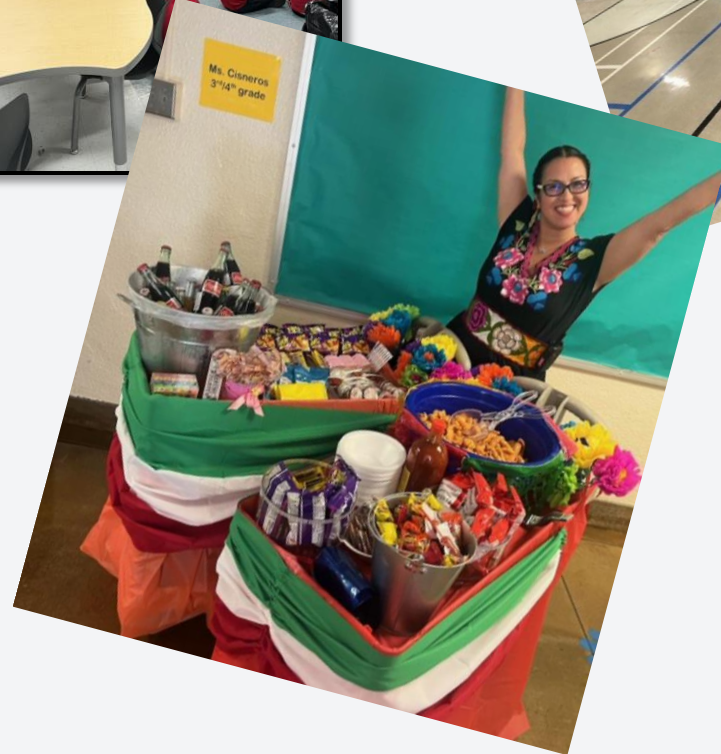
Pledge to the Texas Flag



"Honor the Texas flag. I pledge allegiance to the Texas, one and indivisible."

Irving Dual Language Academy

Mrs. Mayra Gutierrez Ibarra, Principal



Bonham Academy

Mr. Christopher Herrera,
Principal



2023-2024 1882 Dual Language Community Lab Schools Principals!



Mrs. Mayra
Gutierrez-Ibarra,
Principal
Irving DL
Academy



Mr. David
García,
Principal
Twain DL
Academy

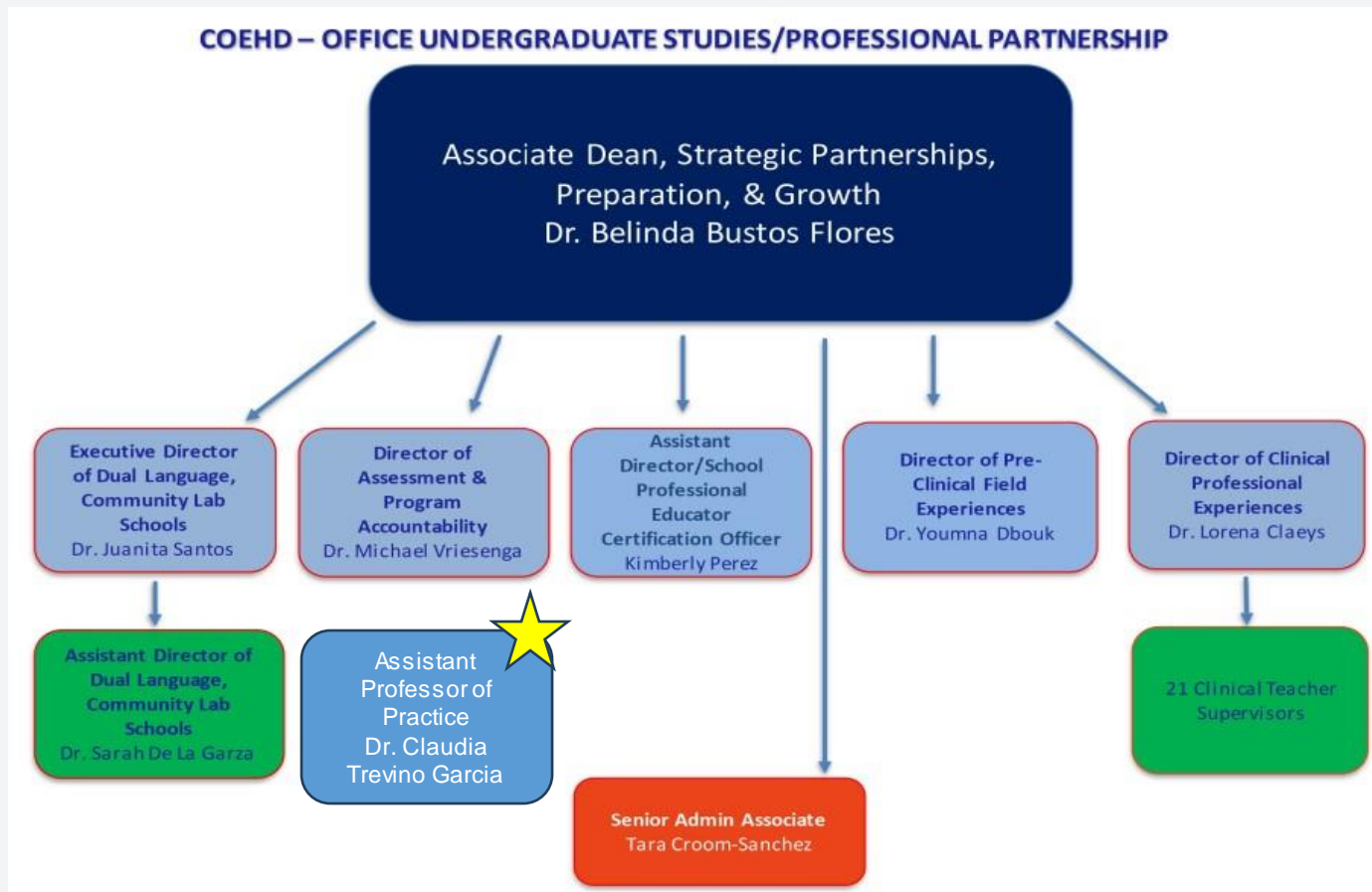


Mr. Christopher
Herrera,
Principal
Bonham
Academy

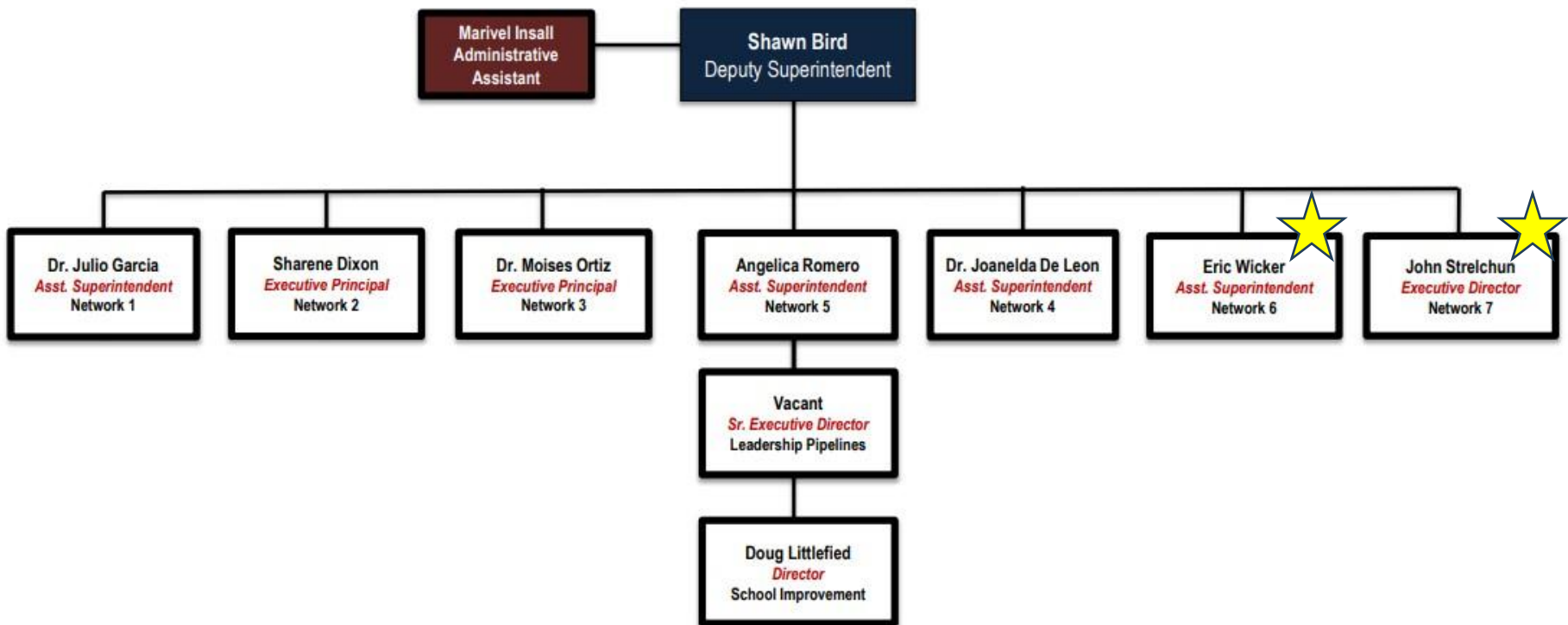


Ms. Rebecca
DeLeon
Principal
Graebner
Elementary

2023-2024 1882 Partnerships Organizational Chart



2023-2024 1882 Partnerships Organizational Chart



SAISD Partners

Thank you, SAISD
Partners, for your
continuous support!



Mrs. Esmeralda Alday,
Executive Director
Dual Language, ESL,
& Migrant Department



Dr. Mónica Medina
Dual Language
Coordinator,
Dual Language, ESL
& Migrant Department



Mr. Eric Wicker
Assistant Superintendent
of School Leadership
Superintendent's Cabinet

Performance Metrics

- **Academic Improvement**
 - determined by meeting the overall rating as outlined in the agreement.
- **Organizational Strength**
 - measured by charter fidelity, 1 out of 3 metrics (attendance, attrition, and parent/teacher survey).
- **Financial Health**
 - determined by audits conducted by SAISD and monthly reconciliation between UTSA executive director and principals
- **Renewal Process**
 - 2024-25
 - Use next year's data to determine renewal
 - 2 or more not met, probation/revocation



Research

- 8 research & support projects in progress
- 3 projects pending IRB approval
- 2 projects completed

Campus Support/Clinical Teachers

- graduate counseling student placement at Irving DL Academy
- Instructional shadowing
- Preclinical and clinical teachers serve on campuses.



Irving Dual Language Academy

Mrs. Mayra Gutierrez Ibarra, Principal



July 2023

565 students
Grades PreK 3-8th
30 teachers
Dual Language
wall-to-wall campus

98 % Hispanic
88 % At Risk
93 % Eco Dis
9 % SPED
5 % GT
72% EB

Irving Dual Language Academy 1882 Budget Plan 23-24

Irving		\$ 542,463
Charter Management Fee	Tarifa de gestión de la carta	\$67,375
Instructional Coach	Entrenador de instrucción	\$64,538
Instructional Coach Stipend	Estipendio del entrenador de instrucción	\$7,500
Teacher Salary & All Fringe Benefits	Salario del maestro y todos los Beneficios complementarios	\$211,743
Personnel	Personal	\$61,727
Instructional Supplies	Suministros de instrucción	\$124,054
Substitute Pay	Pago sustituto	\$3,000

Twain Dual Language Academy

Mr. David García,
Principal



July 2023

602 students

Dual Language
wall-to-wall
campus

92% Hispanic

72% At Risk

57% Eco Dis

13% SPED

19% GT

49% EB

Twain DL Academy 1882 Budget Plan 23-24

Twain	\$ 313,679
Substitute pay	\$640
Fringe Benefits	\$54,816
Management Fee	\$78,228
Instructional Supplies	\$179,995
Professional Development	\$13,000

Bonham Academy

Mr. Christopher Herrera,
Principal



June 2023

588 students

Grades K-8th

40 teachers

Dual Language and
Monolingual campus

92% Hispanic

5 % White

69 % At Risk

63 % Eco Dis

12 % SPED

22 % GT

39% EB

Bonham 1882 Budget Plan (2023-24)

Bonham	\$ 260,557
Charter Management Fee	\$76,885
Instructional Supplies	\$124,774
Substitute Pay	\$800
Fringe Benefits	\$53,118
Operating Costs	\$5000
Staff	

Graebner Elementary

Ms. Rebecca DeLeon,
Principal

July 2023

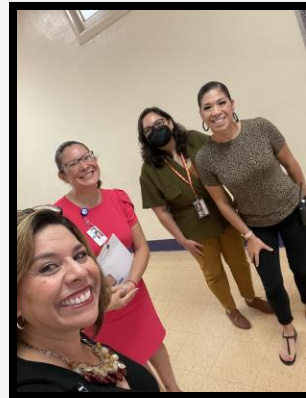
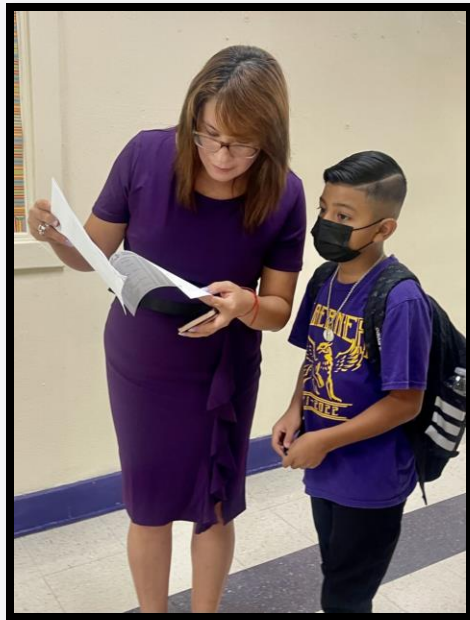
Attendance 92.4%

606 students

Grades PreK – 5th
Grade

42 teachers

Dual Language and
Monolingual campus



97 % Hispanic

3 % White

76 % At Risk

95 % Eco Dis

19 % SPED

6 % GT

37% EB

Graebner 1882 Budget Plan 23-24

School	\$674,999
Salaries	\$461,810
Benefits	\$97,954
Substitute Pay	\$1,600
Extra Duty Pay	\$20,000
Instructional Supplies	\$5,005
Charter Management Fee	\$77,512
Student Travel	\$7,000
Contracted Services	\$10,000

¡Felicidades! SB 1882 Dual Language Lab Schools *Year in Review*



- **3rd year of the Partnership, the first of its kind in the state!**
- 5 current research studies are in progress
- 2 Professional dev. sessions
- 1 Campus support session
- **Preclinical/clinical teacher placements**
- New Chair : Mrs. Erica Lira Castro and
- New Vice Chair: Dr. Yvonne Katz

Academic Performance



- Preliminary STAAR Data
- Preliminary TELPAS Data
- MAP Growth Data for 2021-22 and 2022-23
 - Conditional Growth Index
 - Math
 - Reading
 - Spanish
- Results from Program Evaluation



Preliminary 2023 STAAR Data Reading Language Arts

1882 Dual Language Schools
Preliminary 2023 STAAR Data
SAISD Dual Language, ESL & Migrant Department

RLA	3rd		4th		5th		6th		7th		8th	
	2022	2023	2022	2023	2022	2023	2022	2023	2022	2023	2022	2023
	% Appr	% Likely Passed	% Appr	% Likely Passed	% Appr	% Likely Passed	% Appr	% Likely Passed	% Appr	% Likely Passed	% Appr	% Likely Passed
Bonham	69	74	67	55	76	59	68	67	75	74	65	59
Irving	61	67	70	36	64	56	30	39	61	52	69	71
Twain	83	66	94	75	80	88	61	68	89	91		91
Graebner	50	31	39	19	55	42						
District	57	47	59	40	64	59	49	40	63	51	63	53

Preliminary 2023 STAAR Data Math

1882 Dual Language Schools
Preliminary 2023 STAAR Data
SAISD Dual Language, ESL & Migrant Department

Math	3rd		4th		5th		6th		7th		8th	
	2022	2023	2022	2023	2022	2023	2022	2023	2022	2023	2022	2023
	% Appr	% Likely Passed	% Appr	% Likely Passed	% Appr	% Likely Passed	% Appr	% Likely Passed	% Appr	% Likely Passed	% Appr	% Likely Passed
Bonham	71	58	53	59	64	48	45	37	51	23	50	10
Irving	66	53	48	31	56	50	37	49	34	23		
Twain	87	68	90	83	73	65	75	43	83	61		39
Graebner	25	19	27	12	55	36						
District	49	30	47	38	55	44	47	25	40	24	40	16

Preliminary 2023 STAAR Data – Science and Social Studies

1882 Dual Language Schools
Preliminary 2023 STAAR Data
SAISD Dual Language, ESL & Migrant Department

Science & Social Studies	5th Science		8th Science		8th Social Studies	
	2022	2023	2022	2023	2022	2023
	% Appr	% Likely Passed	% Appr	% Likely Passed	% Appr	% Likely Passed
Bonham	36	31	65	32	44	26
Irving	22	25	40	43	21	23
Twain	76	48		71		29
Graebner	29	12				
District	41	26	49	31	32	14

Preliminary 2023 TELPAS Data

1882 Dual Language Schools
 Preliminary 2023 STAAR Data
 SAISD Dual Language, ESL & Migrant Department

		COMPOSITE RATING								
TELPAS	SCORED		BEGINNER		INTERMEDIATE		ADVANCED		ADVANCED HIGH	
	2022	2023	2022	2023	2022	2023	2022	2023	2022	2023
Bonham	193	174	17%	11%	31%	38%	34%	33%	18%	17%
Irving	301	333	19%	21%	44%	41%	25%	23%	12%	15%
Twain	197	239	15%	13%	32%	32%	34%	36%	19%	19%
Graebner	219	200	37%	40%	39%	40%	18%	16%	6%	5%
District	8742	9362	18%	20%	38%	39%	32%	29%	13%	12%

Academic Growth - MAP Math



Bonham Academy
NWEA MAP Mathematics
Growth Evaluated Against Grade Level Norms

Fall – Spring

	2020-2021 (Baseline)	2021-2022 (Year 1 of 1882 Partnership)				2022-2023 (Year 2 of 1882 Partnership)			
	School Conditional Growth Percentile	Projected School Growth	School Conditional Growth Index	School Conditional Growth Percentile	Projected School Growth	School Conditiona l Growth Index	School Conditional Growth Percentile		
Kinder	1	21.1	-0.88	20 Below Projections	22.0	0.55	71	Above Projections	
1st	1	19.3	0.11	55 Above Projections	20.1	-1.97	2	Below Projections	
2nd	1	16.8	-1.10	14 Below Projections	17.6	-0.35	36	Below Projections	
3rd	7	14.3	2.76	99 Above Projections	15.1	2.32	99	Above Projections	
4th	3	12.5	1.22	89 Above Projections	13.3	0.35	64	Above Projections	
5th	2	11.3	-0.08	47 Below Projections	11.6	-2.10	2	Below Projections	



Academic Growth - MAP Math

Irving Dual Language Academy NWEA MAP Mathematics Growth Evaluated Against Grade Level Norms					Fall – Spring				
	2020-2021 (Baseline)	2021-2022 (Year 1 of 1882 Partnership)			2022-2023 (Year 2 of 1882 Partnership)				
	School Conditional Growth Percentile	Projected School Growth	School Conditional Growth Index	School Conditional Growth Percentile	Projected School Growth	School Conditional Growth Index	School Conditional Growth Percentile		
K	98	21.2	0.92	82 Above Projections	21.6	1.71	96 Above Projections		
1st	57	19.4	-1.19	12 Below Projections	19.9	-2.62	1 Below Projections		
2nd	11	16.9	-0.51	31 Below Projections	17.5	1.51	93 Above Projections		
3rd	99	14.3	2.88	99 Above Projections	15.0	3.24	99 Above Projections		
4th	56	12.4	1.73	96 Above Projections	13.1	-2.08	2 Below Projections		
5th	49	10.3	0.25	60 Above Projections	11.0	-0.34	37 Below Projections		



Academic Growth - MAP Math

Twain Dual Language Academy NWEA MAP Mathematics Growth Evaluated Against Grade Level Norms					Fall – Spring				
	2020-2021 (Baseline)	2021-2022 (Year 1 of 1882 Partnership)			2022-2023 (Year 2 of 1882 Partnership)				
	School Conditional Growth Percentile	Projected School Growth	School Conditional Growth Index	School Conditional Growth Percentile	Projected School Growth	School Conditional Growth Index	School Conditional Growth Percentile	School Conditional Growth Percentile	
K	26	20.8	1.03	85 Above Projections	20.9	0.76	78 Above Projections		
1st	4	19.2	-0.17	43 Below Projections	20.1	-0.09	47 Below Projections		
2nd	2	16.8	-1.47	7 Below Projections	17.4	-0.89	19 Below Projections		
3rd	---	14.6	2.26	99 Above Projections	15.2	2.11	98 Above Projections		
4th	---	12.8	2.93	99 Above Projections	13.5	1.04	85 Above Projections		
5th	---	11.0	0.78	78 Above Projections	12.1	-0.58	28 Below Projections		



Academic Growth - MAP Math

Graebner Elementary NWEA MAP Mathematics Growth Evaluated Against Grade Level Norms					Fall – Spring			
	2021-2022 (Baseline)				2022-2023 (1 st Year in the 1882 Partnership)			
	Projected School Growth	School Conditional Growth Index	School Growth Percentile	Conditional Projections	Projected School Growth	School Conditional Growth Index	School Growth Percentile	Conditional Projections
Kinder	20.8	-2.27	1	Below Projections	21.5	-1.74	4	Below Projections
1st	19.4	-0.96	17	Below Projections	20.1	-1.39	8	Below Projections
2nd	16.9	-1.05	15	Below Projections	17.6	-0.30	38	Below Projections
3rd	14.1	-0.16	43	Below Projections	14.8	0.79	79	Above Projections
4th	12.3	-0.32	37	Below Projections	12.5	-1.60	5	Below Projections
5th	10.1	0.30	62	Above Projections	10.7	-0.27	39	Below Projections

Academic Growth – MAP Math

MAP MATHEMATICS

Growth Evaluated Against Student Norms: Percentage of Students Who Met or Exceeded Growth Projections

	Graebner Elementary		Bonham Academy			Irving Dual Language Academy			Twain Dual Language Academy		
	2021-2022	2022-2023	2020-2021	2021-2022	2022-2023	2020-2021	2021-2022	2022-2023	2020-2021	2021-2022	2022-2023
Kinder	28%	27%	20%	42%	55%	70%	63%	76%	48%	54%	58%
1st	37%	27%	29%	47%	32%	49%	28%	14%	31%	50%	49%
2nd	29%	39%	13%	33%	36%	37%	44%	61%	22%	34%	35%
3rd	43%	52%	37%	74%	72%	79%	79%	84%	---	87%	70%
4th	38%	23%	29%	60%	58%	50%	77%	25%	---	87%	72%
5th	50%	43%	27%	53%	29%	60%	56%	29%	---	58%	40%

Academic Growth -MAP Reading



Bonham Academy NWEA MAP Reading Growth Evaluated Against Grade Level Norms					Fall – Spring				
	2020-2021 (Baseline)	2021-2022 (Year 1 of 1882 Partnership)			2022-2023 (Year 2 of 1882 Partnership)				
	School Conditional Growth Percentile	Projected School Growth	School Conditional Growth Index	School Conditional Growth Percentile	Projected School Growth	School Conditional Growth Index	School Conditional Growth Percentile		
K	1	20.4	3.31	99 Above Projections	20.1	6.17	99 Above Projections		
1st	1	17.9	-1.20	11 Below Projections	18.3	-5.93	1 Below Projections		
2nd	1	15.2	0.47	68 Above Projections	15.9	2.14	98 Above Projections		
3rd	27	12.4	0.73	77 Above Projections	12.8	0.24	60 Above Projections		
4th	5	9.6	0.11	54 Above Projections	9.8	-1.44	8 Below Projections		
5th	14	8.5	0.43	67 Above Projections	8.8	0.06	52 Above Projections		

Academic Growth - MAP Reading



Irving Dual Language Academy NWEA MAP Reading Growth Evaluated Against Grade Level Norms					Fall – Spring				
	2020-2021 (Baseline)	2021-2022 (Year 1 of 1882 Partnership)				2022-2023 (Year 2 of 1882 Partnership)			
	School Conditional Growth Percentile	Projected School Growth	School Conditional Growth Index	School Conditional Growth Percentile	Projected School Growth	School Conditional Growth Index	School Conditional Growth Percentile		
K	12	---	---	---	---	---	---	---	---
1st	16	---	---	---	---	---	---	---	---
2nd	39	---	---	---	15.9	-0.22	41	Below Projections	
3rd	99	12.8	0.47	68	Above Projections	13.5	0.53	70	Above Projections
4th	99	10.4	1.78	96	Above Projections	10.6	-2.96	1	Below Projections
5th	---	8.3	-0.02	49	Below Projections	9.0	-0.64	26	Below Projections



Academic Growth - MAP Reading

Twain Dual Language Academy NWEA MAP Reading Growth Evaluated Against Grade Level Norms									
	2020-2021 (Baseline)	2021-2022 (Year 1 of 1882 Partnership)				2022-2023 (Year 2 of the 1882 Partnership)			
	School Conditional Growth Percentile	Projected School Growth	School Conditional Growth Index	School Conditional Growth Percentile		Projected School Growth	School Conditional Growth Index	School Conditional Growth Percentile	
Kinder	14	---	---	---	---	---	---	---	---
1st	1	---	---	---	---	---	---	---	---
2nd	7	---	---	---	---	---	---	---	---
3rd	1	12.4	1.86	97	Above Projections	12.6	0.27	61	Above Projections
4th	---	9.6	1.16	88	Above Projections	9.7	-0.66	25	Below Projections
5th	---	7.7	0.30	62	Above Projections	8.0	0.90	82	Above Projections

Academic Growth - MAP Reading



Graebner Elementary NWEA MAP Reading Growth Evaluated Against Grade Level Norms								
	2021-2022 (Not in the 1882 Partnership)				2022-2023 (1 st Year in the 1882 Partnership)			
	Projected School Growth	School Conditional Growth Index	School Conditional Growth Percentile		Projected School Growth	School Conditional Growth Index	School Conditional Growth Percentile	
K	19.9	-1.61	5	Below Projections	20.0	-2.15	2	Below Projections
1st	17.4	-1.27	10	Below Projections	18.3	-1.86	3	Below Projections
2nd	15.0	0.23	59	Above Projections	15.9	-0.32	37	Below Projections
3rd	13.0	-1.18	12	Below Projections	13.7	-1.07	14	Below Projections
4th	9.9	0.11	54	Above Projections	10.8	-3.17	1	Below Projections
5th	7.8	-0.26	40	Below Projections	8.7	-1.58	6	Below Projections

Academic Growth -MAP Reading

MAP READING

Growth Evaluated Against Student Norms: Percentage of Students Who Met or Exceeded Growth Projections

	Graebner Elem.		Bonham Academy			Irving Dual Language Academy			Twain Dual Language Academy		
	2021-2022	2022-2023	2020-2021	2021-2022	2022-2023	2020-2021	2021-2022	2022-2023	2020-2021	2021-2022	2022-2023
Kinder	34%	32%	23%	81%	92%	36%	---	---	43%	---	---
1 st	26%	22%	18%	30%	5%	30%	---	---	30%	---	---
2 nd	38%	39%	36%	56%	65%	51%	---	43%	36%	---	---
3 rd	34%	36%	46%	62%	56%	55%	43%	50%	41%	72%	50%
4 th	46%	16%	31%	71%	44%	78%	65%	17%	---	74%	42%
5 th	48%	36%	34%	50%	50%	---	53%	32%	---	61%	54%

Academic Growth -MAP Reading **Spanish**

MAP READING SPANISH

Growth Evaluated Against Student Norms: Percentage of Students Who Met or Exceeded Growth Projections

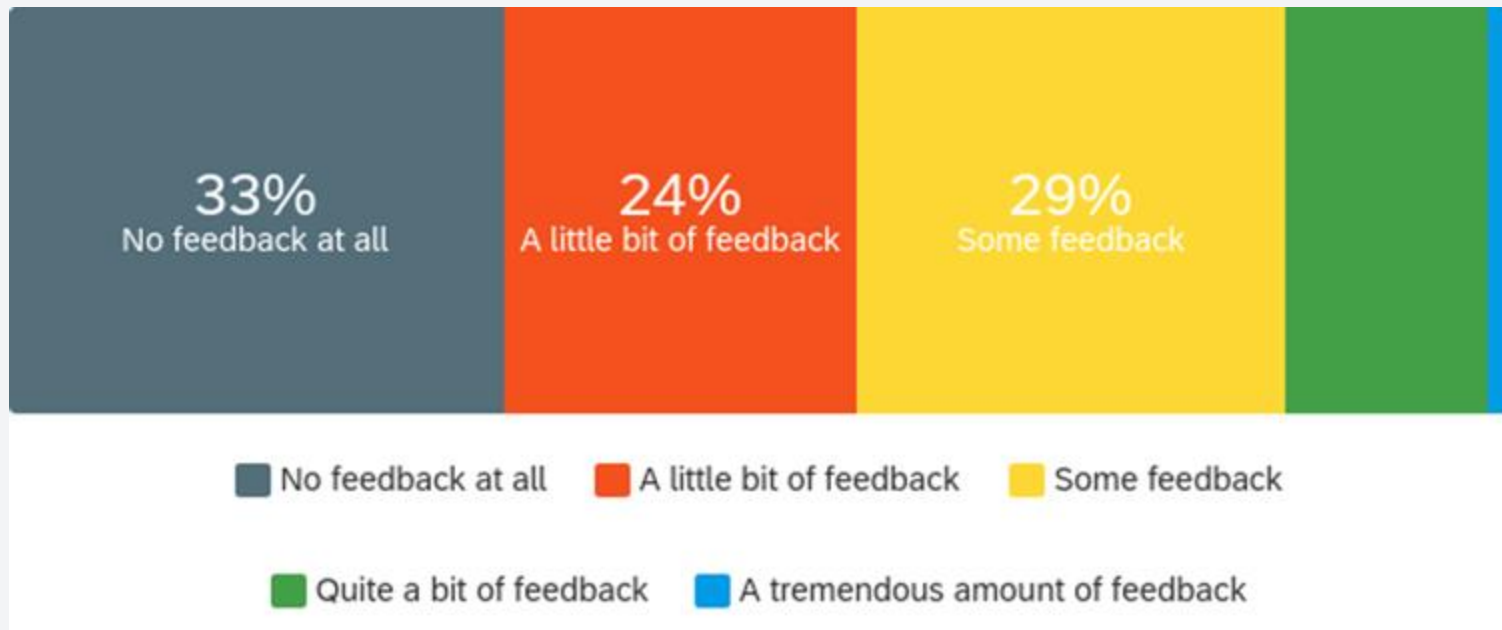
	Graebner Elem.		Bonham Academy			Irving Dual Language Academy			Twain Dual Language Academy		
	2021-2022	2022-2023	2020-2021	2021-2022	2022-2023	2020-2021	2021-2022	2022-2023	2020-2021	2021-2022	2022-2023
Kinder	26%	46%	13%	31%	48%	54%	75%	82%	37%	51%	62%
1st	29%	45%	14%	25%	18%	18%	32%	26%	33%	38%	36%
2nd	20%	41%	8%	34%	32%	31%	23%	48%	32%	42%	57%
3rd	57%	83%	47%	50%	78%	68%	69%	88%	47%	72%	78%
4th	23%	55%	39%	55%	42%	87%	68%	31%	---	65%	63%
5th	50%	67%	35%	46%	38%	20%	63%	58%	---	50%	49%

Organizational Strength

- Results from the 1882 Campus Climate Survey
 - Topics Covered
 - School culture
 - Teacher collaboration
 - Professional development
 - Teacher influence
 - 1882 Partnership

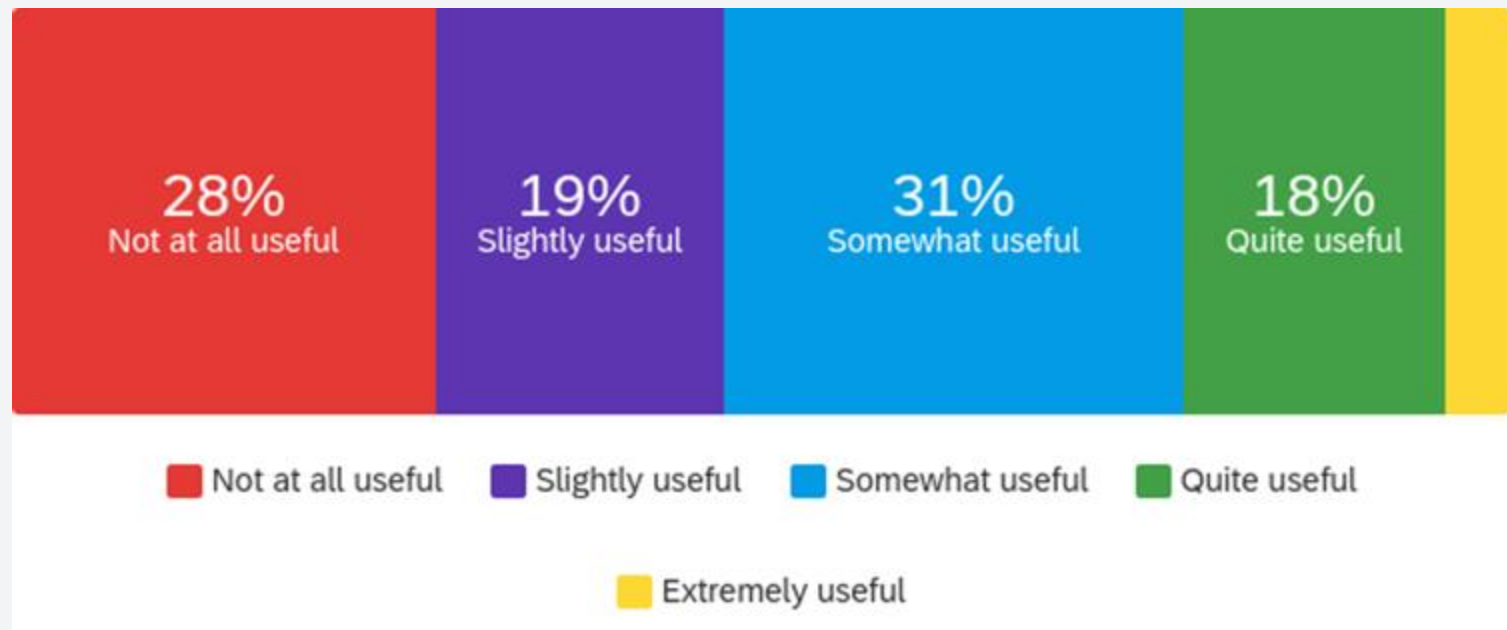
Organizational Strength

Q1: How much feedback do you receive on your role as an educator from the 1882 Partnership?”



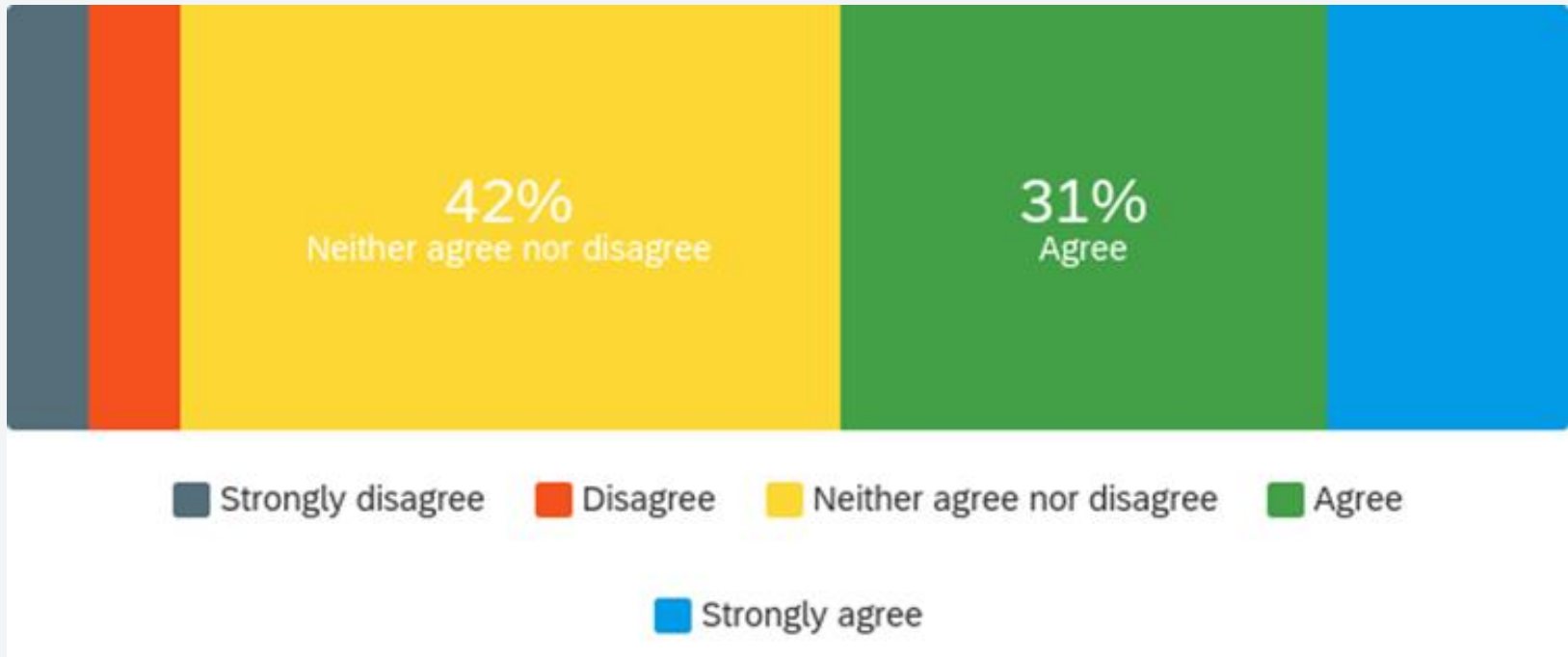
Organizational Strength

Q2: Overall, how useful has the feedback you received from the 1882 Partnership been on your growth as an educator?



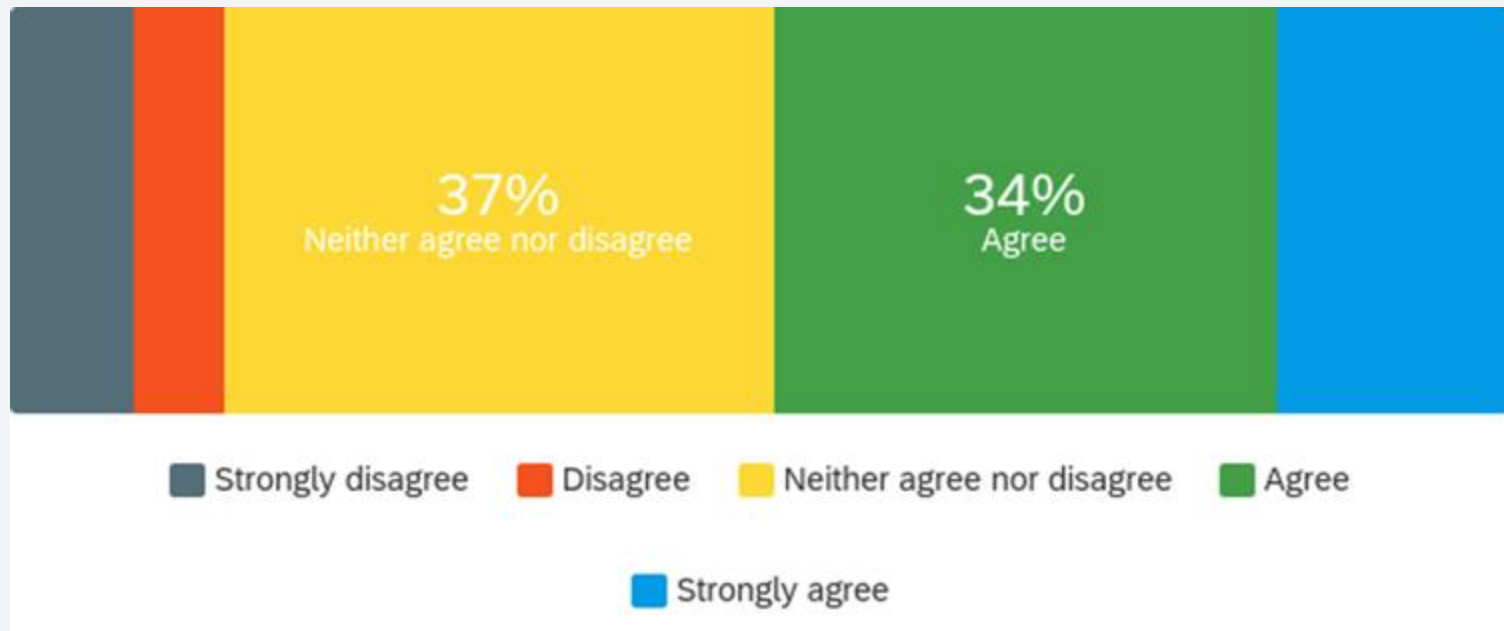
Organizational Strength

Q4: The 1882 Partnership has a positive impact on student achievement.



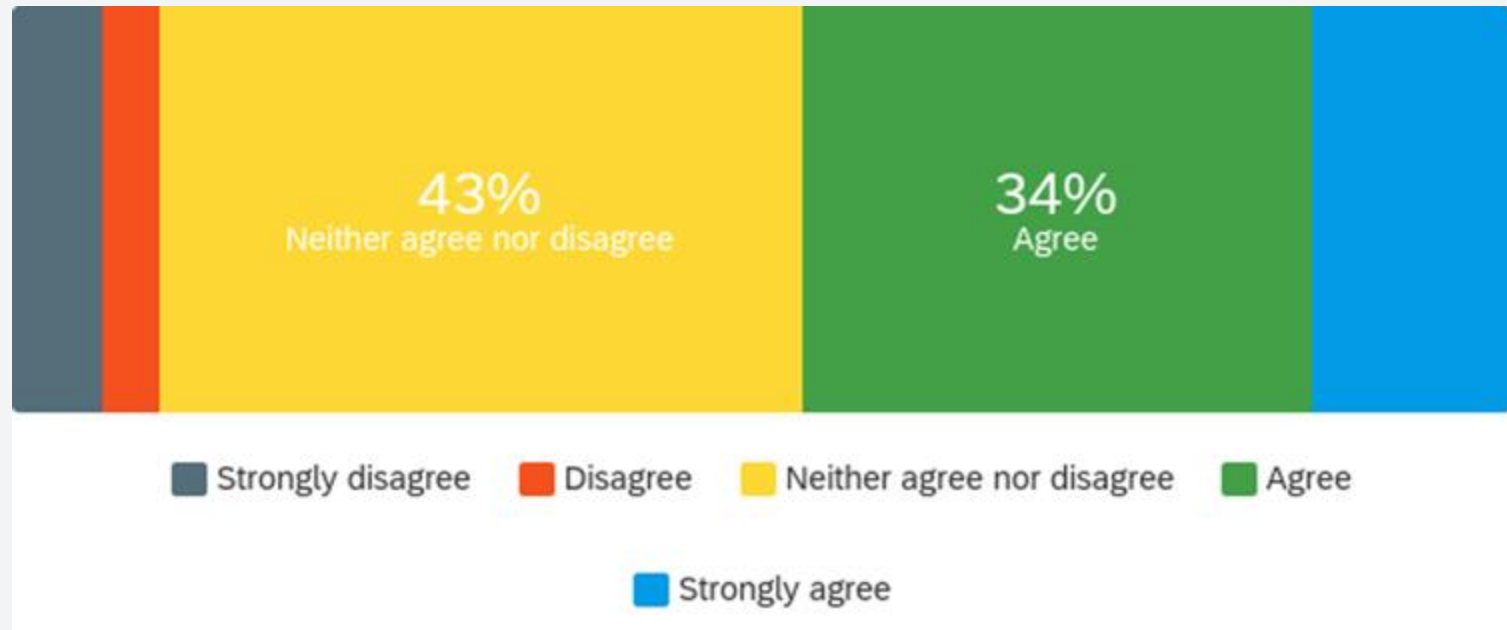
Organizational Strength

Q5: The 1882 Partnership has a positive impact on school culture and the learning environment.



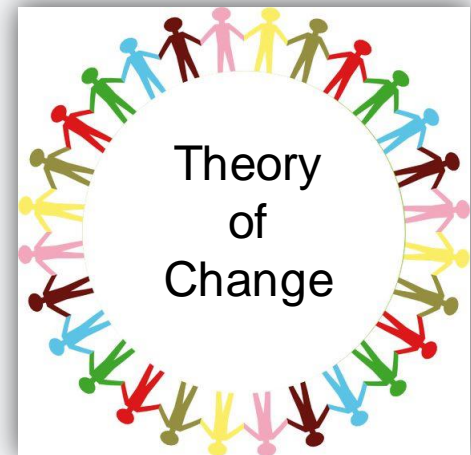
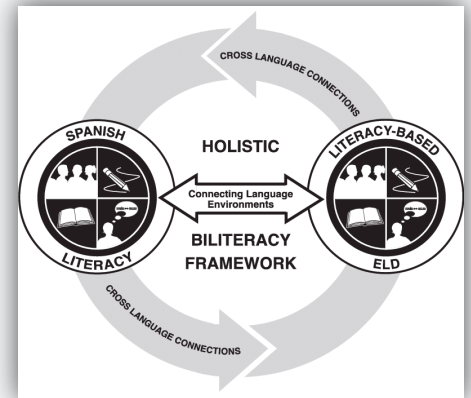
Organizational Strength

Q6: The 1882 Partnership has a positive impact on dual language instruction.



Program Evaluation Recommendations

- Actively monitor fidelity and consistency of the district's Biliteracy Framework (e.g., Dictado, Diario Duo, & Lotta Lara)
- **Increase and distribute walkthroughs across PreK-8 grade levels and 4 campuses**
- Communicate 1882 Partnership's theory of change to all stakeholders in accessible and multiple formats (website, community forums, parent events)
- **Create an 1882 Partnership mission and vision**
- Teachers - Identify and increase awareness of the 1882 Partnership's benefits; create 1882 funds committee





¡Gracias!

