

---

# University of Texas at San Antonio

SB 1882 Partnership

Dual Language Community Lab Schools

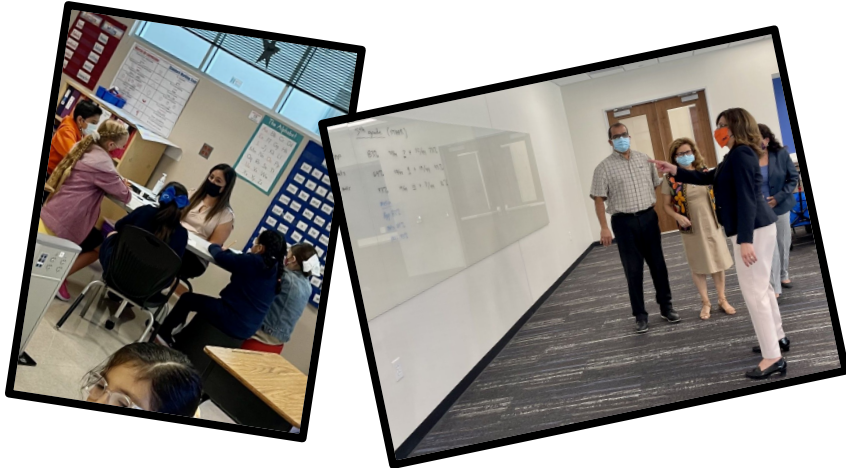
**UTSA-San Antonio ISD**

Board Meeting 6:00 p.m

September 27, 2021



# SB 1882 Partnerships



- Bring additional expertise, resources, and autonomy to schools

- Improve student achievement

- Enforcing high standards for academic, organizational, and financial success

---

---

# TEA Requirements for 1882 Partnerships



## SAISD

- SAISD School Board approves schools as in-district charters
- TEA approves district's application for 1882 benefits

## UTSA

- UTSA as a partner maintains fidelity to TEC 11.174, and TAC 48.252 and TAC 12.101.
  - Responsible for management and operation of the schools related to TEC and TAC.
-

---

# SAISD In-District Charter Schools

## Partnership Schools

- Bonham Academy
- Mark Twain Dual Language Academy
- Washington Irving Dual Language Academy

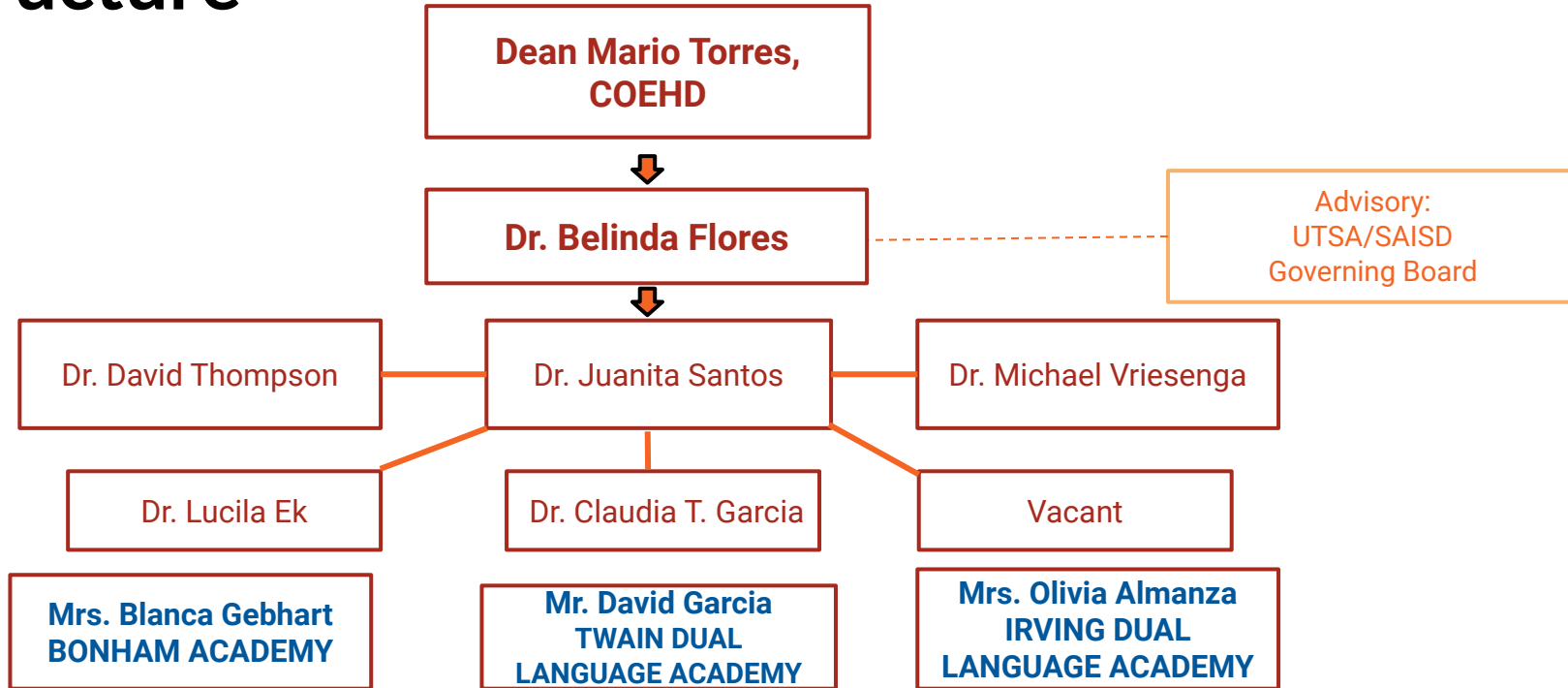
## Charter Schools

- District schools granted additional autonomy by the SAISD Board in return for greater accountability
  - Performance Metrics
- 



---

# Community Lab Schools Management Structure



---

# Dual Language Community Lab Schools Principals



**Mrs. Olivia Almanza**  
Irving DL Academy



**Mr. David Garcia**  
Twain DL Academy



**Mrs. Blanca Gebhart**  
Bonham Academy

---



# SB 1882 Partner Key Responsibilities



---

## Academic Excellence

- School Performance Metrics for Bonham, Twain, and Irving Academies
- Oversee and support implementation of the schools' charters
- Hire, manage, and evaluate principals (TPESS)
- Innovative instruction

## Organizational Strength

- UTSA autonomy on staffing, employee management, evaluation (TPESS), budget, curriculum, instructional materials, calendar, daily schedule, PD, assessments
- UTSA compliments SAISD dual language efforts through research and curricular expertise.
- SAISD provides food services, facilities, transportation, IT

## Financial Health

---

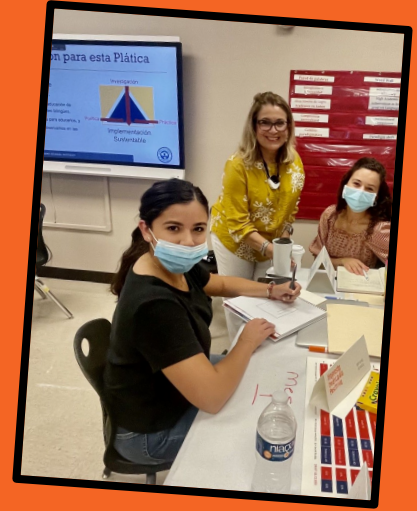
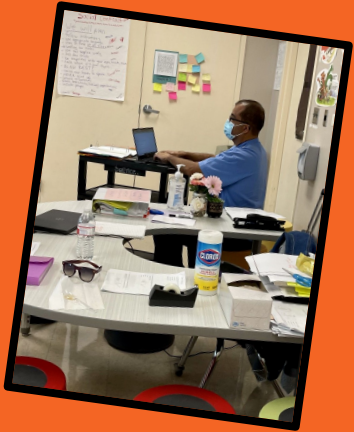
- Annual financial audit of 1882 funds; Approve budget



---

# SAISD Key Responsibilities

---



---

## Academic Excellence

- Manage school enrollment
- Provide and support special populations
- Hold UTSA accountable for academic improvement

## Organizational Strength

- Maintain buildings
- School safety and health
- Human Resources functions with SAISD policy
- Legal compliance

## Financial Health

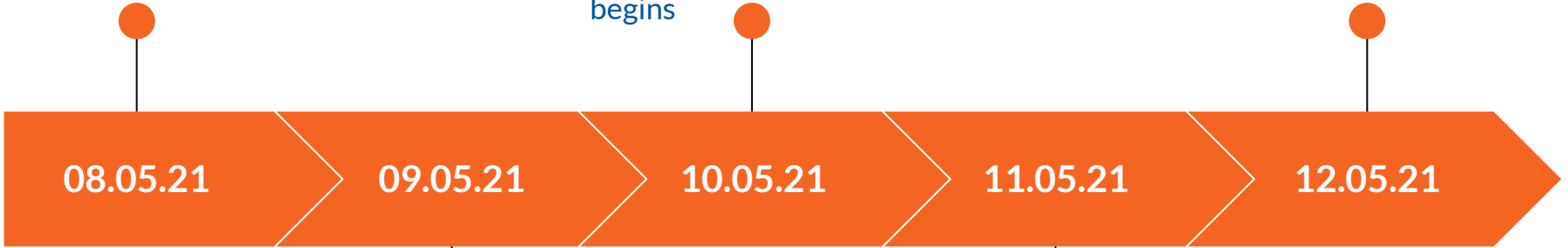
- Managing financial functions in accordance with SAISD policy
  - Hold UTSA accountable for financial performance
- 



Relationship building with principals and key stakeholders

Bonham Principal Search Process

Attend all SAISD DL training



Conclude Bonham Principal Search

Continue campus principal visits/walk-throughs/  
Feedback

Research on campuses begins

Support new Bonham principal

Monthly research meetings

Weekly principal/SAISD principal/UTSA meetings

Continue Bonham principal search

Research form, matrix, meetings with UTSA faculty

1st 1882 Partnership Board Meeting

Support new Bonham principal

Monthly research meetings

Weekly principal/SAISD principal/UTSA meetings



One UTSA Circle  
San Antonio, TX, 78249  
[utsa.edu](http://utsa.edu)

*Thank You!*

**Next Meeting**

February 22, 2022

6:00 p.m.