

University of Texas at San Antonio

1882 Dual Language Community Lab Schools Update

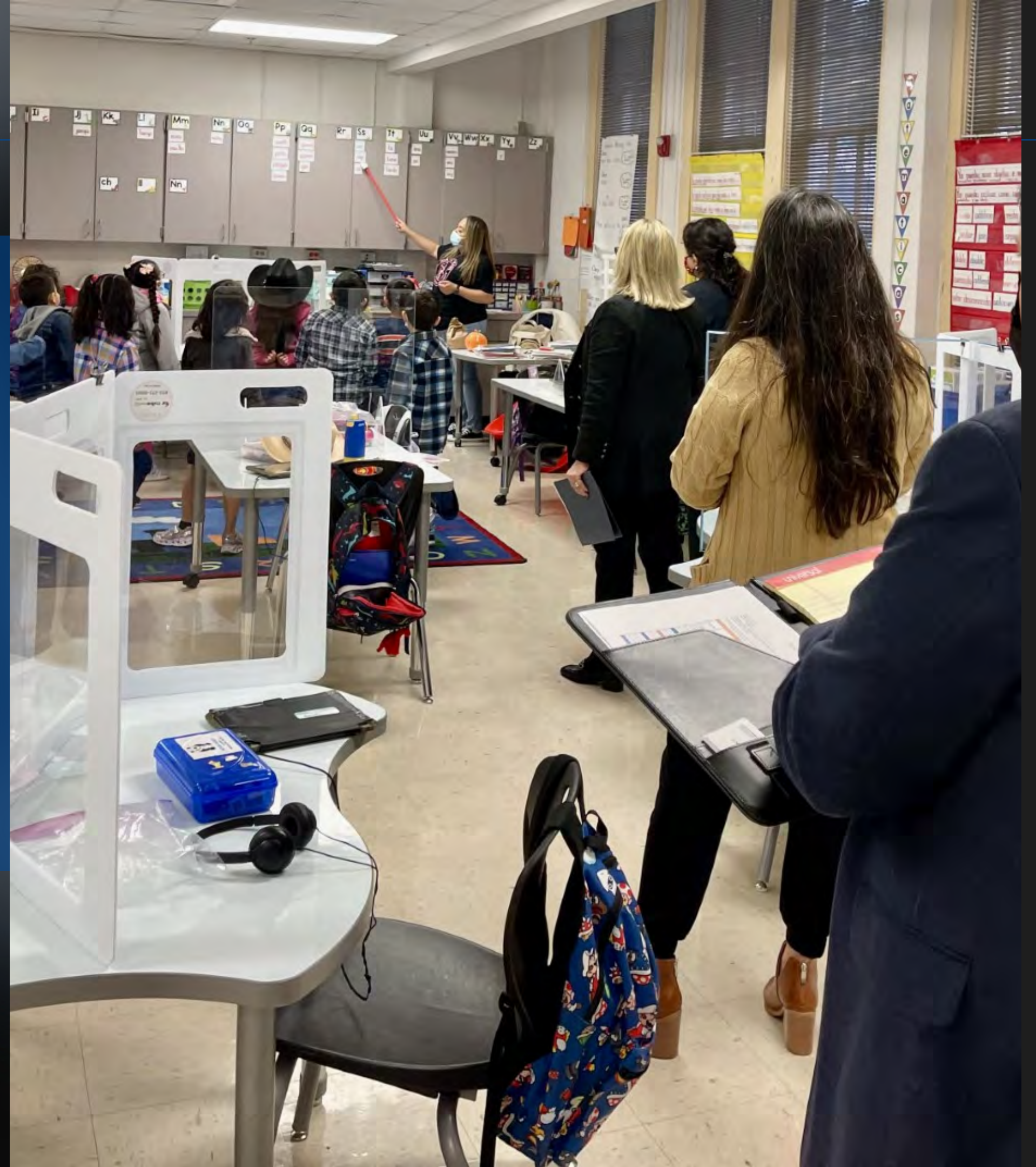
Dr. Juanita (Johnnie) Santos

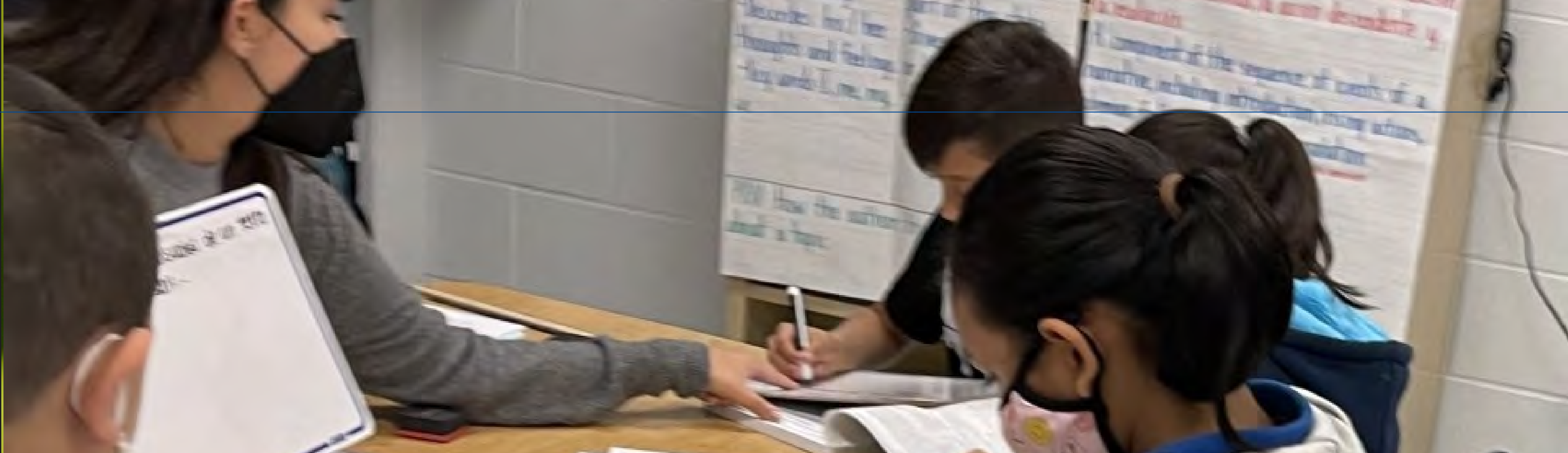
juanita.santos@utsa.edu

Interdisciplinary Learning and Teaching Department
Meeting

December 3, 2021

8:30-8:55 a.m.





SB 1882 Dual Language Partnership Director's Key Responsibilities

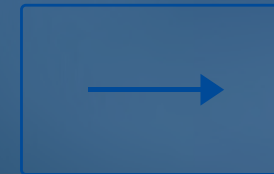
MAINTAIN FIDELITY TO THE PARTNERSHIP AGREEMENT

ENSURE THE CAMPUS CHARTERS ARE UPHELD

FACILITATE UTSA'S FACULTY ENGAGEMENT WITH DL SCHOOLS

SERVE AS LIASON BETWEEN SAISD AND UTSA

PARTNERSHIP AGREEMENT



ACADEMIC
EXCELLENCE

ORGANIZATIONAL
STRENGTH

FINANCIAL HEALTH

MANAGEMENT AND OPERATION OF THE CHARTERS



AUTONOMY

PROGRESSIVE
APPROACH TO
INSTRUCTION

INNOVATIVE
INSTRUCTION

reposito permanecerá en
reposito a menos que una
fuerte no equilibrada

4:05-9:40 Cort
9:40-10:25 7
10:25-11:21
11:20-12:05 7
12:05-12:15 Cort
12:15-1:05
1:05-1:25

-Certo Cebal



FACILITATE UTSA FACULTY ENGAGEMENT WITH DUAL LANGUAGE CAMPUSES



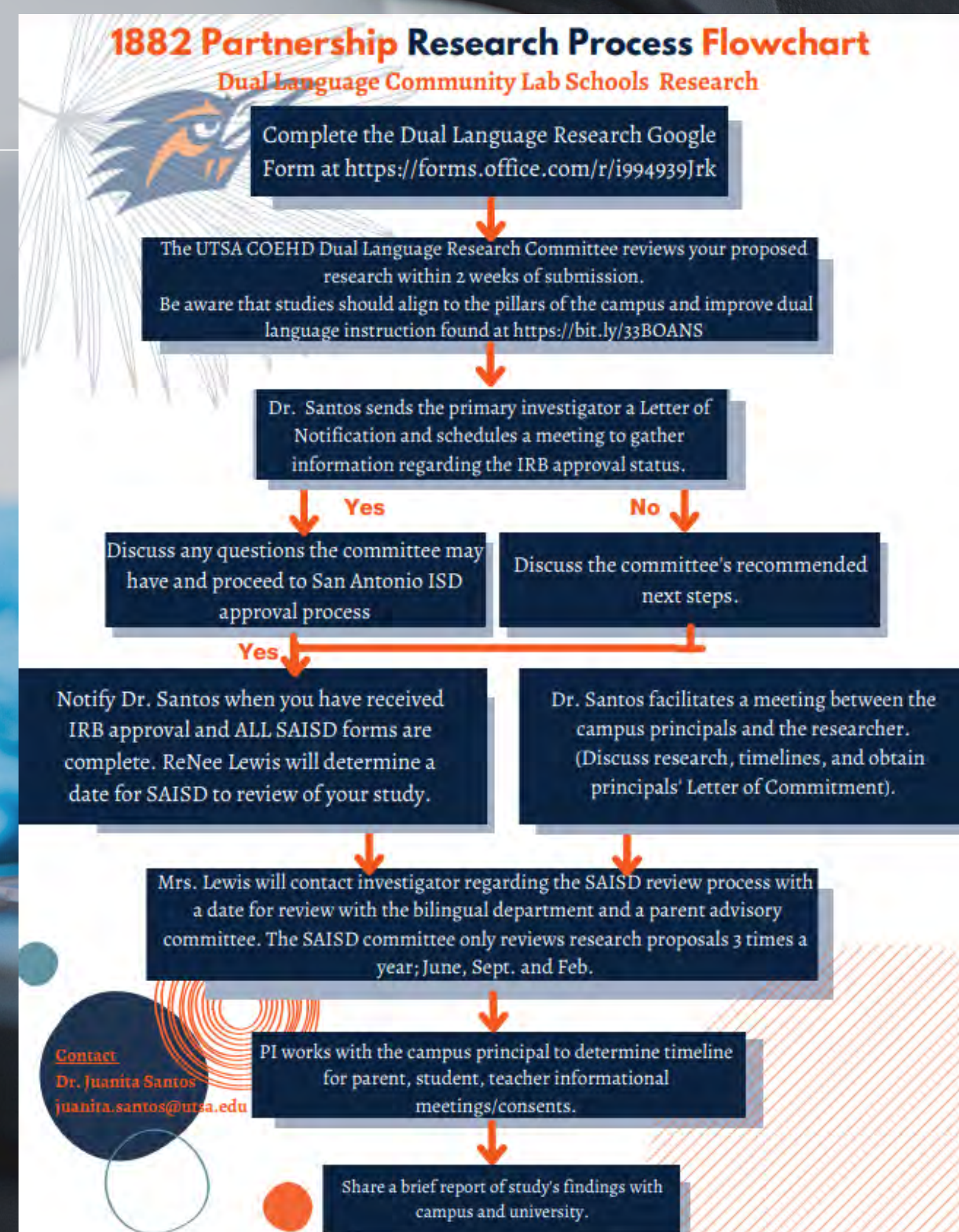
DUAL LANGUAGE
RESEARCH
PROPOSALS/MEETINGS

TEACHER
PROFESSIONAL
DEVELOPMENT

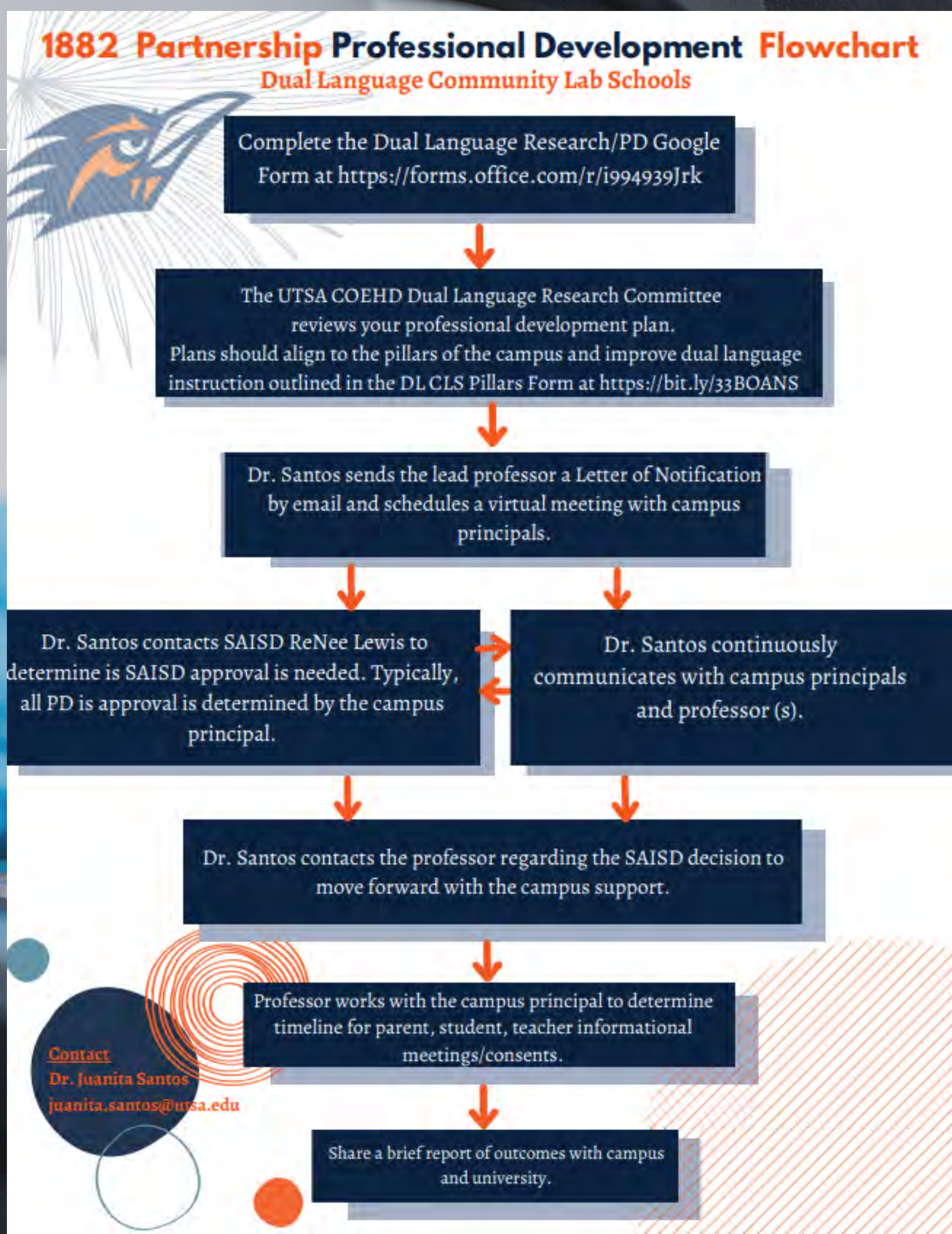
STUDENT SUPPORT

CLINICAL TEACHERS

Research Approval Flowchart



Professional Development Approval Flowchart



1882 Current Campus RESEARCH and PROFESSIONAL DEVELOPMENT SUPPORT



Primary Investigator	Topic	School	Status
Dr. Uchenna Emenaha	6th Grade science and social studies teachers' collaboration to develop culturally relevant units on socio-economic, historical, scientific, and cultural effects of public health issues.	All three campuses	Seeking SAISD Approval
Dr. Erica Castro-Villarreal	Graduate student SEL support for teachers with students	Irving	In Progress
Dr. Lucila Ek	Racial equity in STEM programs	All three campuses	Fall 2022
Dr. Becky Huang	Bilingual/dual language learners' language and literacy development	Bonham	Completed
Dr. Howard Smith	Biliteracy development, language arts instruction and victims of trauma	Bonham	Pending
Dr. Kristen Lindahl	Professional certification for dual language educators secondary levels.	All three campuses	In Progress
Dr. Kathryn Henderson	Secondary Oral Language Development	Twain	In Progress
Dr. Mariela Rodriguez	Critical role of principals and assistant principals in supporting	All three campuses	Pending



SERVE AS LIASON BETWEEN SAISD AND UTSA



VISITS AND TOURS
FROM STATE
LEADERS

TEXAS EDUCATION
AGENCY DUAL LANGUAGE
FRAMEWORK PILOT

PROFESSOR/DISTRICT
WALK-THROUGHS

CLINICAL TEACHER
PREPARATION



Check out our
Dual Language FAQ
and
Quarterly Newsletter
on our
Dual Language Website

[HTTPS://BIT.LY/3LW58FY](https://bit.ly/3LW58FY)

Research Proposal Form



Thank you!

Contact me at juanita.santos@utsa.edu